

Surface Prep Diamond Tooling



SURFACE PREPARATION

MATERIAL	G1400 SERIES					G600 SERIES				SHARX	G200
	G1410	G1420	G1440	G1470	G1480	G620	G640	G670	ARROW		
REMOVAL	-	-	-	-	-	-	-	-	-	-	-
POROUS CERAMIC GLUES	-	-	●	●●●	●●	●	-	●●●	-	-	-
PLASTIC-LIKE CERAMIC GLUES	-	●	●●●	-	-	●	●●●	-	●●●	-	●●●
VINYL GLUES	●	●●	●●●	●	●	●●	●●●	●	●●●	-	●●●
PAINT & THIN EPOXY (<2 MM)	●	●●	●●●	●	●	●●	●●●	●	●●●	-	●●●
THICK EPOXY (15-40 MM)	-	●	●●●	●	-	●	●●●	●	-	-	●●●
GRINDING	-	-	-	-	-	-	-	-	-	-	-
RAIN-DAMAGED CONCRETE	-	-	-	●●	●●●	-	●	●●	-	-	●
CONCRETE, SOFT	-	-	-	●●●	●●	-	●●	●●●	-	-	●●
CONCRETE, MEDIUM HARD	-	●	●●●	●	-	●	●●●	●	-	-	●●●
CONCRETE, HARD	●●●	●●●	●	-	-	●●●	●	-	-	●	●
SEMI-POLISHED CONCRETE	●●●	●	-	-	-	●	-	-	-	-	-

●●●= Optimal ●●= Good ●= Acceptable - = Not recommended

GOLD	SILVER	BRONZE
------	--------	--------

Surface Prep Diamond Tooling Information

Coding

Husqvarna's range of diamond grinding and polishing tools is the result of our commitment to providing the best possible options for every situation and application. The diamond tools are coded to be able to easily find the correct level of performance, applications, bond size, grit size and segment size for any project.



Product Codification Guide

A - Application

G for grinding applications

P for polishin applications

B - Level of Performance

G1400 series represents the highest level of performance for all professionals focusing on high efficiency and profitability.

G600 series is a good, low cost alternative where production outweighs tool life.

P1200 Dry

P100 Wet

C - Bond Type/Related Application

G1410 - very soft tool to grind the hardest floors

G1420 - soft tool for hard surface grinding

G1440 - medium tool for medium-hard concrete

G1470 - hard tool for soft and abrasive concrete

G1480 - very hard tool for very abrasive surface

G620 - soft tool for hard surface grinding

G640 - medium tool for soft and abrasive concrete

G670 - hard tool for soft and abrasive concrete

P1240 - highest performance in concrete and terazzo polishing

P1280 - very hard tool for wet applications and stain removal

D - Grit Size Reference/Related Mesh Size

3 - 20/30

4 - 30/40

5 - 60/80

6 - 120/140

E - Reference/Segment

S - Single

D - Double

T - Triple

F - Grit Size Reference/Related Mesh Size

2 - 50

3 - 100

4 - 200

5 - 400

6 - 800

7 - 1500

8 - 3,000

Wet vs Dry Grinding

The Husqvarna range of metal bond tools covers tooling for both wet and dry grinding.

Wet

- Production rates will be higher than dry grinding.
- Diamond segments can wear faster due to presence of abrasive slurry.
- Scratches from diamond grit may be deeper.
- Increased clean up time.

Dry or Slightly Wet

- Production rates will be slower on harder materials than when wet grinding.
- Softer bond segments are required in order to encourage segment wear.
- Scratches from diamond grit may not be as deep when compared to wet grinding.
- More heat is generated by the diamond segment.
- Cleaner work environment.

Power & Weight

A more powerful machine enables the operator to choose harder bond tools.

Grit Size

Changing the size of the diamond grit to a smaller particle/grit size will affect the performance of the diamond tool in the following ways:

- Create a finer scratch pattern.
- Increase the life of the diamond tool.
- The opposite will occur when changing to a larger particle/grit size.

Grit Size (Mesh)	Application
20	Material Removal
30	Rough Grinding
50	Medium Grinding
100	Fine Grinding



Metal-Bond Diamond Tools - Redi Lock®

Redi Lock diamond tools are perfect for concrete grinding applications, such as aggregate exposure, preparation for tiling floors, removal of epoxy coatings and sealers as well as flattening. The system eliminates the need for multiple sets of diamond disc holders, and replaces time consuming screw-on-diamond systems. The Redi Lock dovetail simply locks into the slot and is ready for use. The system is available for a variety of machine manufacturers.

Husqvarna offers two series of Redi Lock tools, the G 1400 and G 600. With five different types of products, the G1400 series offers the excellent removal rates and durability, providing maximum profitability and performance with all types of applications. It also covers surface preparation applications in only three steps before using the resin tools in polishing applications. The G600 series is cost competitive tooling with good performance when used on grinders smaller than the PG 830.

Half Set vs Full Set

Half Set – Diamonds are placed at three alternating positions (or four on the PG 400) on the diamond holder disc. When using a half set, the diamonds tend to follow the surface of the floor. This puts more weight per square inch on the diamond tooling, making it grind more aggressively on hard floors. It does not completely flatten the floor.

Full Set – Diamonds are placed at each of the six positions (or eight on the PG 400) on the diamond holder disc. The full set is used when a flat floor is desired. If the floor has undulations, the machine will grind the high areas to match the low spots. The result is a smooth surface.

Single Segment vs Double Segment

Single Segment – Working with a single segment will increase the pressure on each segment. This will lead to more aggressive and increased productivity; however, the life of the tool will be shorter.

Double Segment – Working with a double segment will decrease the pressure on each segment, reducing the wear rate on the diamond segments. This will lead to a smoother scratch pattern, and will also reduce the load on the machine.

Tools for Coating & Concrete Cap Removal

G1410 Grinding Segments

13 MM SEGMENT HEIGHT, SOLD IN 3 PACKS

- Optimal performance: hard concrete or semi-polished concrete.
- Acceptable performance: vinyl glues, paint and thin epoxy, or thick epoxy.



G1410 | X-Soft

Name	Shape	Single/Double	Grit Size (Mesh)	Part Number
G1413S	Two Notch	Single	20	501897901
G1413D	Two Notch	Double	20	501897902
G1414S	One Notch	Single	30	501898901
G1414D	One Notch	Double	30	501898902
G1415S	Rounded End	Single	50	501899201
G1415D	Rounded End	Double	50	501899202
G1416S	Round	Single	100	501899701
G1416D	Round	Double	100	501899702

G1420 Grinding Segments

13 MM SEGMENT HEIGHT, SOLD IN 3 PACKS

- Optimal performance: hard concrete.
- Good performance: vinyl glues, paint and thin epoxy.
- Acceptable performance: concrete medium, semi-polished concrete, plastic-like ceramic glues, thick epoxy.



G1420 | Soft

Name	Shape	Single/Double	Grit Size (Mesh)	Part Number
G1423S	Two Notch	Single	20	501899901
G1423D	Two Notch	Double	20	501899902
G1424S	One Notch	Single	30	501900701
G1424D	One Notch	Double	30	501900702
G1425S	Rounded End	Single	50	501900801
G1425D	Rounded End	Double	50	501900802
G1426S	Round	Single	100	501901501
G1426D	Round	Double	100	501901502

Tools for Coating & Concrete Cap Removal

G1440 Grinding Segments

13 MM SEGMENT HEIGHT, SOLD IN 3 PACKS

- Optimal performance: plastic-like ceramic glues, vinyl glues, paint and thin epoxy. Thick epoxy.
- Good performance: medium concrete.
- Acceptable performance: hard concrete.



G1440 | Medium

Name	Shape	Single/Double	Grit Size (Mesh)	Part Number
G1443S	Two Notch	Single	20	501902501
G1443D	Two Notch	Double	20	501902502
G1444S	One Notch	Single	30	501904901
G1444D	One Notch	Double	30	501904902
G1445S	Rounded End	Single	50	501906501
G1445D	Rounded End	Double	50	501906502
G1446S	Round	Single	100	501907401
G1446D	Round	Double	100	501907402

G1470 Grinding Segments

13 MM SEGMENT HEIGHT, SOLD IN 3 PACKS

- Optimal performance: soft concrete, porous ceramic glues.
- Good performance: rain-damaged concrete.
- Acceptable performance: medium concrete, vinyl glues, paint and thin epoxy. Thick epoxy.



G1470 | Hard

Name	Shape	Single/Double	Grit Size (Mesh)	Part Number
G1473S	Two Notch	Single	20	501907701
G1473D	Two Notch	Double	20	501907702
G1474S	One Notch	Single	30	501907901
G1474D	One Notch	Double	30	501907902
G1475S	Rounded End	Single	50	501908101
G1475D	Rounded End	Double	50	501908102

G1480 Grinding Segments

13 MM SEGMENT HEIGHT, SOLD IN 3 PACKS

- Optimal performance: rain-damaged concrete.
- Good performance: soft concrete, porous ceramic glues.
- Acceptable performance: vinyl glues, paint and thin epoxy.



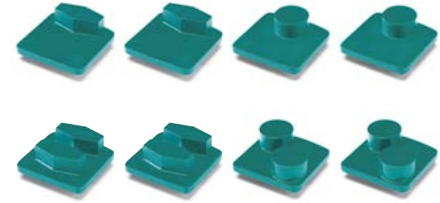
G1480 | X-Hard

Name	Shape	Double/Triple	Grit Size (Mesh)	Part Number
G1483D	Two Notch	Double	20	501908201
G1483T	Two Notch	Triple	20	501908202
G1484D	One Notch	Double	30	501908301
G1484T	One Notch	Triple	30	501908302

Tools for Coating & Concrete Cap Removal

G620 Grinding Segments

10.5 MM SEGMENT HEIGHT, SOLD IN 3 PACKS



- Optimal performance: hard concrete.
- Good performance: vinyl glues, paint and thin epoxy.
- Acceptable performance: medium concrete, semi-polished concrete, plastic-like ceramic glues. Thick epoxy.

G620 | Soft

Name	Shape	Single/Double	Grit Size (Mesh)	Part Number
G623S	Hexagonal	Single	20	503847902
G623D	Hexagonal	Double	20	503847903
G624S	Hexagonal	Single	30	503847904
G624D	Hexagonal	Double	30	503847905
G625S	Round	Single	50	503847906
G625D	Round	Double	50	503847907
G627S	Round	Single	100	503847908
G627D	Round	Double	100	503847909

G640 Grinding Segments

10.5 MM SEGMENT HEIGHT, SOLD IN 3 PACKS



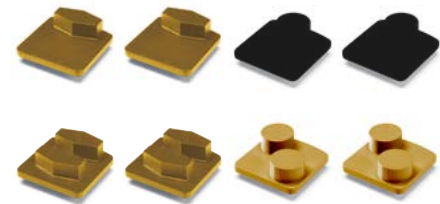
- Optimal performance: medium concrete, plastic-like ceramic glues, vinyl glues, paint and thin epoxy. Thick epoxy.
- Good performance: soft concrete
- Acceptable performance: hard concrete, rain-damaged concrete

G640 | Medium

Name	Shape	Single/Double	Grit Size (Mesh)	Part Number
G643S	Hexagonal	Single	20	503883401
G643D	Hexagonal	Double	20	503883402
G644S	Hexagonal	Single	30	503883403
G644D	Hexagonal	Double	30	503883404
G645S	Round	Single	50	503883405
G645D	Round	Double	50	503883406
G647D	Round	Double	100	503883408

G670 Grinding Segments

10.5 MM SEGMENT HEIGHT, SOLD IN 3 PACKS



- Optimal performance: soft concrete, porous ceramic glues, plastic-like ceramic glues.
- Acceptable: medium concrete, rain-damaged concrete, vinyl glues, paint and thin epoxy. Thick epoxy.

G670 | Hard

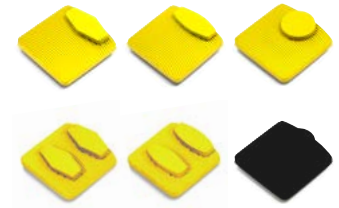
Name	Shape	Single/Double	Grit Size (Mesh)	Part Number
G673S	Hexagonal	Single	20	503885501
G673D	Hexagonal	Double	20	503885502
G674S	Hexagonal	Single	30	503885503
G674D	Hexagonal	Double	30	503885504
G675D	Round	Double	50/60	503885505
G677D	Round	Double	100	503885506

Tools for Coating & Concrete Cap Removal

G200 Rental Segments

3 MM SEGMENT HEIGHT, SOLD IN 3 PACKS

- Small floor grinding jobs.
- Optimal performance: medium concrete.
- Good performance: soft concrete.
- Acceptable performance: hard concrete.



G200

Name	Shape	Single/Double	Grit Size (Mesh)	Part Number
G225S	Hexagon	Single	30	588099901
G225D	Hexagon	Double	30	588099904
G227S	Convex	Single	60	588099902
G227D	Convex	Double	60	588099905
G243S	Round	Single	120	588099903

Redi Lock 10 Segment

INITIAL GRINDING STEPS

- Excellent life when used either wet or dry on soft-medium concrete.
- Removal rate can be easily controlled.
- Optimal performance: medium concrete.
- Good performance: soft concrete.



Redi Lock 10 Segment

Name	Bond	Grit Size (Mesh)	Part Number
10 Segment Diamond S20	Soft	20	580251509
10 Segment Diamond S60	Soft	60	580251510
10 Segment Diamond S120	Soft	120	580251511
10 Segment Diamond S20	Medium	20	580251512
10 Segment Diamond S60	Medium	60	580251513
10 Segment Diamond S120	Medium	120	586000401

Piranha™ PCD

AGGRESSIVE REMOVAL OF CONCRETE, ADHESIVE & SCREEDS

- PCD: single or double quarter-round PCD with protective diamond strip. For maximum wear & productivity.



Piranha™ PCD

Name	Single/Double	Recommended Equipment	Part Number
G11X1D - 3 pack	Double	All grinders	543327302
G11Y1D - 3 pack	Double	PG 830 & PG 690	543327303
G14XX - 3 pack	Single	All grinders	543327301

Tools for Coating & Concrete Cap Removal

Arrow G600 Series

REMOVAL OF EPOXY & GLUE



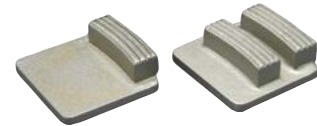
- Arrow G600: Redi lock design. Works on all Husqvarna grinders. (all doubles)

Arrow G600

Name/Color	Bond Hardness	Grit Size (Mesh)	Part Number
G621D - Green	Soft	20	585672404
G641D - Grey	Medium	20	585672408
G671D - Cooper	Hard	20	585672406

RT Cap Cutters

AGGRESSIVE REMOVAL OF HARD TROWELED CAP ON CONCRETE



- RT Cap: ripple top segment with alternating hard-soft bond

RT Cap Cutters

Name	Single/Double	Part Number
RT Cap Cutter S	Single	587822509
RT Cap Cutter D	Double	587522508

Husqvarna Sharx™

FAST & EASY REMOVAL OF DENSE SURFACES ON HARD TROWELED CONCRETE



- Sharx: metal bond significantly increases the productivity & ensures pads stay open and sharpe.

Sharx™

Name	Shape	Bond Hardness	Grit Size (Mesh)	Part Number
Sharx Single	Arrow	Ultra Soft	30	574430402
Sharx Double	Arrow	Ultra Soft	30	574430403

Bushhammers

BRUSHHAMMERED SURFACE



- Bushhammer: creating a course floor to prepare for floor covering.
Bushhammered or large aggregate exposed surface.

Bushhammers

Description	Part Number
Full Kits (plates + mounting brackets + rollers)	
*Husqvarna BHT 9 in (230 mm) - (PG 690, PG 540, PG 510)	593344201
*Husqvarna BHT 10.6 in (270 mm) - 3 rollers (PG 830)	593344211
*Husqvarna BHT 10.6 in (270 mm) - 6 rollers (PG 830)	593344212
Replacement Parts	
Fix Kit (roller mounting bracket)	595018102
Husqvarna BH Rollers (roller only)	597650304
Husqvarna BHT Plate 9 in (230 mm) - (PG 690, PG 540, PG 510)	597650301
Husqvarna BHT Plate 10.6 in (270 mm) - 3 roller (PG 830)	597650302
Husqvarna BHT Plate 10.6 in (270 mm) - 6 roller (PG 830)	597650303
PG 690 Bush Hammer Skirt	594080205
PG 830 Bush Hammer Skirt	594080206