



**Omni Pro Mold Resistant Coatings are designed for restoration professionals and applicators to combat mold and mildew on a wide range of interior surfaces.**

- Mold and mildew resistant coating formulated with an advanced biocide blend that prevents the growth of mold and mildew\* on the dried paint film
- 10-Year interior application mold & mildew warranty\*
- Dry in 1 hour
- For professional use; ideal for new construction, remodeling or remediation of interior surfaces
- Use on interior poured concrete, concrete block, brick/masonry, stucco, wood, plywood/OSB, gypsum and painted surfaces
- Suitable to use on CPVC and PVC
- Clear contains UV tracer to ensure full coverage; White can be tinted to woodtone
- Water-base formula; Soap & water cleanup
- Passes ASTM 5590, 3273 and G-21 Tests



PART#	DESCRIPTION	SIZE	UPC	CASE PACK
2624-5047	OmniPro Mold Resistant Coating White	5 Gal	020066033491	1
2627-5040	OmniPro Mold Resistant Coating Clear	5 Gal	020066033507	1

\*This product contains a mildewcide to prevent the growth of mold and mildew on the paint film only.

**Combat  
Mold & Mildew**



# MOLD RESISTANT\* COATING



**OmniPro Mold Resistant Coatings are designed for restoration professionals and applicators to combat mold and mildew. These mold resistant coatings are ideal for new construction, remodeling or repair projects and contain advanced antimicrobial technology to prevent future mold and mildew growth on the coated surface.**

## Surface Preparation

Surface must be free from any dirt or loose foreign materials, oil, grease and standing water. Note: OmniPro Mold Resistant Coatings will promote water resistance and protect from stains, but will not correct mold and mildew associated with chronic water and moisture intrusion. Apply only to pH stable concrete (below 9.0).

## Application

Mix thoroughly prior to and intermittently during use. Be sure that any settled material is dispersed thoroughly into solution. Apply OmniPro Mold Resistant Coatings with a brush, roller or sprayer. Apply OmniPro Mold Resistant Coatings at up to 400 sq. ft. (37 m<sup>2</sup>) per gallon. For airless spraying, use a .015 tip and medium pressure. Apply when air and surface temperatures are 40-90°F(5-32°C). Only one coat is necessary; a second coat may be desired. Coverage rates vary depending on surface porosity, desired coverage and hiding.

## Drying Time

At normal temperatures, dries to the touch in 30 minutes. High humidity and/or cool temperatures may lengthen the drying times. Re-coat in 1 hour if desired.

## Limitation

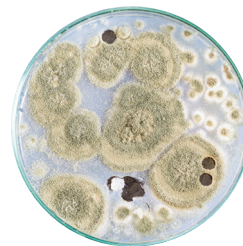
This product does not protect users against illness caused by food borne bacteria. OmniPro does not warrant or guarantee that indoor air quality or health related issues will be reduced or eliminated. Exterior durability is limited to exposure and wear and is not covered by warranty.

## Note

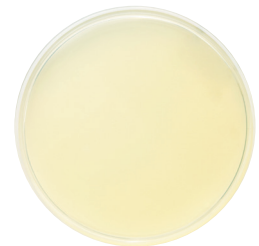
OmniPro Mold Resistant Coatings are formulated with an advanced biocide blend to prevent mold and mildew growth on the surface of the dried coating film only. OmniPro Mold Resistant Coatings do not contain any mercury or lead compounds. The guaranteed protection of the dried coating film from mold and mildew is a result of the biocide, the nature and durability of the resins and other formulation characteristics. Contains a mix of biocides.

## Storage & Disposal

Keep container closed when not in use. Do not transfer contents to other containers for storage or disposal. Dispose of unused contents in accordance with local, state and federal regulations.



Uncoated



Coated

\*This product contains a mildewcide to prevent the growth of mold and mildew on the paint film only.